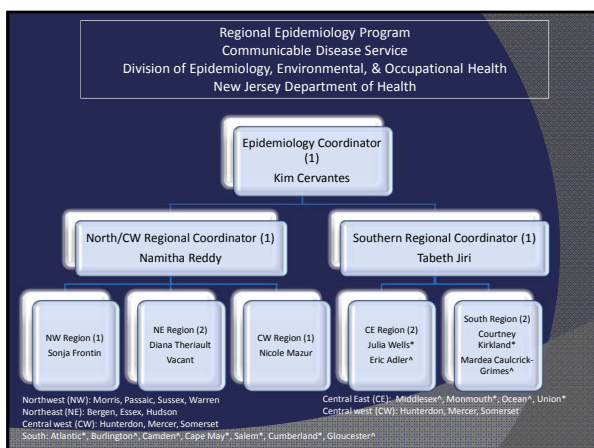
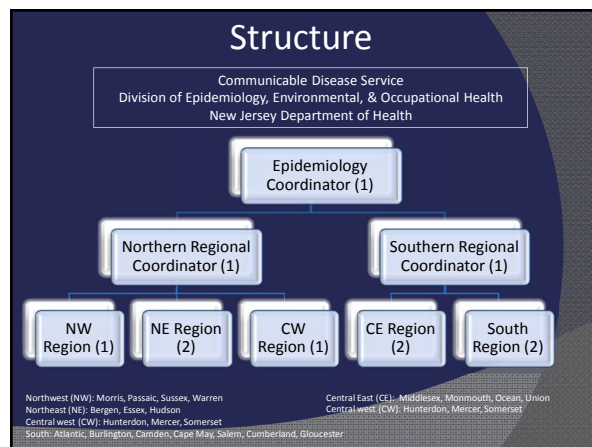


NJDOH REGIONAL EPIDEMIOLOGY PLANNING



- ## Background
- Reductions in PHEP grant funding
 - System was unsustainable
 - Value Epidemiology/Surveillance capacity
 - Regionalization of services was best option to sustain this capacity and ensure consistency
 - Reduce LINC'S epidemiologists from 21 to 11
 - Move positions from LINC'S agency to NJDOH

- ## Timeline
- June 2013 - CDS planning team assembled
 - August 2013 - MOA executed/Positions posted
 - September/October 2013 - Interviews conducted
 - October/November 2013 - Positions offered
 - As of March 10, 2014, 10/11 staff on board



- ## Activities to Date
- Meeting with Stakeholders
 - NJACCHO, APIC, NJAPHNA
 - Contact all local health departments
 - Obtain contacts for communicable disease staff during and after business hours
 - Participate in local meetings
 - Health officers, nurses, REHS, disease investigators
 - Working with LHDs on communicable disease investigations/outbreaks

Responsibilities NJAC 8:57

- Local health officers are the responsible party to ensure communicable diseases and outbreaks listed in NJAC 8:57 are reported to the state health department and appropriately investigated
- Regional epidemiology staff will assist with these investigations, however, they will not be taking over this LHD responsibility

Scope

- Prior to regionalization, assigned roles and responsibilities of regional epidemiologists varied greatly by jurisdiction
- Goals of regionalization
 - Focus on communicable disease
 - Utilization of epidemiologic skill set
 - Application of consistent approach to disease investigation

Communicable Disease Investigations

- Shared responsibility between local health, state health and reporting partners
- Each local jurisdiction is unique and has different needs
- Assess each jurisdiction and their needs and work with them to conduct timely/quality investigations

Case investigation and reporting in CDRSS (both immediately and non-immediately reportable conditions)

<u>LHD Task</u>	<u>Regional Epi Task</u>
<ul style="list-style-type: none"> • Case investigation and reporting for jurisdiction • Routine monitoring for unusual activity • Review CDRSS for quality of investigations within jurisdiction • Close out and finalization of reports within jurisdiction 	<ul style="list-style-type: none"> • Jurisdiction-wide monitoring and consultation with LHD on disease investigations • Review CDRSS for quality of investigations for jurisdiction-wide assessment • Close out and finalization of reports for jurisdiction-wide assessment

Outbreak/cluster investigations (occurring in a single LHD jurisdiction)

<u>LHD Task</u>	<u>Regional Epi Task</u>
<ul style="list-style-type: none"> ○ Identify ○ Report ○ Lead jurisdictional response ○ Perform and/or seek/accept assistance from Regional Epi ○ Complete outbreak summary report in a timely manner 	<ul style="list-style-type: none"> ○ Provide epidemiologic support and consultation ○ Offer/provide epi assistance <ul style="list-style-type: none"> • Descriptive analysis • Develop tools (questionnaire, line list) • Develop study (case-control, cohort) • Basic epi skills (case definition) ○ Offer/provide assistance with outbreak summary report and ensure timely submission

Outbreak/cluster investigations (occurring in multiple jurisdictions)

<u>LHD Task</u>	<u>Regional Epi Task</u>
<ul style="list-style-type: none"> ○ Identify ○ Report ○ Lead jurisdictional response ○ Perform and/or seek/accept assistance from Regional Epi ○ Complete outbreak summary report in a timely manner 	<ul style="list-style-type: none"> ○ Provide epidemiologic support and consultation in all outbreak investigations ○ Offer/provide epi assistance <ul style="list-style-type: none"> • Descriptive analysis • Develop tools (questionnaire, line list) • Develop study (case-control, cohort) • Basic epi skills (case definition) ○ Coordinate epi investigation for jurisdiction/consult with other jurisdictions/work with state on coordination of multi-jurisdiction investigations ○ Coordinate outbreak summary report and ensure timely submission for jurisdiction

Conduct Surveillance (Syndromic, ILI, CDRSS, Others as requested)

<p style="text-align: center;"><u>LHD Task</u></p> <ul style="list-style-type: none"> ⦿ Assist with recruitment and retention of surveillance sites for jurisdiction ⦿ Assist in follow-up investigations of surveillance anomalies that occur within your jurisdiction as reported by Regional Epi 	<p style="text-align: center;"><u>Regional Epi Task</u></p> <ul style="list-style-type: none"> ⦿ Perform routine and enhanced surveillance activities ⦿ Report anomalies to LHD for follow-up investigations and provide assistance if requested ⦿ Coordinate follow-up investigations of surveillance anomalies within multi-jurisdictions
---	--

24/7/365 Availability

<p style="text-align: center;"><u>LHD Task</u></p> <ul style="list-style-type: none"> ⦿ Required to have 24/7/365 response capability ⦿ After hours contacts should be made available to disease reporters (physicians, labs, hospitals) ⦿ After hours contacts should be kept current in the Red Book 	<p style="text-align: center;"><u>Regional Epi Task</u></p> <ul style="list-style-type: none"> ⦿ Required to have 24/7/365 response capability ⦿ LHD who needs consultation can reach NJDOH after hours – 609-392-2020
---	--

Liaison with public health partners

<p style="text-align: center;"><u>LHD Task</u></p> <ul style="list-style-type: none"> ⦿ Identify and liaison with important public health stakeholders in jurisdiction 	<p style="text-align: center;"><u>Regional Epi Task</u></p> <ul style="list-style-type: none"> ⦿ Identify and liaison with important public health stakeholders <ul style="list-style-type: none"> • Work with LHD to assess stakeholders identified • Work within jurisdiction • Ensure county/region wide representation ⦿ Relay pertinent information to stakeholders
---	--

Training

<p style="text-align: center;"><u>LHD Task</u></p> <ul style="list-style-type: none"> ⦿ Identify communicable disease training needs (i.e., outbreak response, routine disease investigations, CDRSS usage) 	<p style="text-align: center;"><u>Regional Epi Task</u></p> <ul style="list-style-type: none"> ⦿ Provide or ensure delivery of communicable disease related training
--	---

Epidemiology/surveillance response planning

<p style="text-align: center;"><u>LHD Task</u></p> <ul style="list-style-type: none"> ⦿ Identify skilled personnel/gaps ⦿ Develop plans for response (e.g., ICS response for epi investigation, lab transport, interviewing) ⦿ Exercise plans 	<p style="text-align: center;"><u>Regional Epi Task</u></p> <ul style="list-style-type: none"> ⦿ Identify skilled personnel/gaps ⦿ Provide training on identified gaps ⦿ Review plans for communicable disease response and surveillance ⦿ Participate in development of NJDOH plans ⦿ Exercise plans
--	--

Improving Communications

- ⦿ Health Officer Communication Protocol
- ⦿ Regional Communicable Disease Forums
 - 4/2/14 Central
 - 4/7/14 South
 - 4/25/14 North
- ⦿ Creation of communicable disease contact lists/email distributions
- ⦿ Local health meet-and-greets

Future Initiatives

- OHSP ISEA Workshop
 - Mapping local health communications
- Outbreak summary reports
- Prioritization of communicable disease investigations
- Communicable disease summary statistics report

Feedback

- Need your help
 - Feedback - questions and concerns
 - Patience - growing pains

Contact Information

Lisa McHugh, MPH (Manager)
Kim Cervantes, MA, MPH, CIC (Coordinator)
NJDOH, CDS
609-826-5964
Fax 609-826-5972
Lisa.Mchugh@doh.state.nj.us
Kim.Cervantes@doh.state.nj.us